

S:\RDEIR_EIS_Recirc\Appendix_Mapbooks\REIS_Mapbook_48k_Index_SDE_10_5.mxd 2018522

Legend

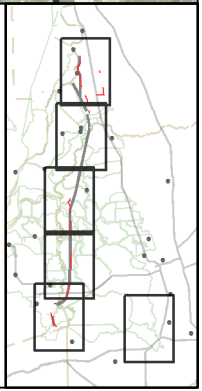
- Interstate
- State Highway/Route
- Railroad
- Plan Area
- Areas of Additional Analysis (Outside of Legal Delta; for Power Only)
- Water

- Proposed Power**
- Substation
 - Capacitor Bank Substation
 - Interconnection Point
- Proposed Power**
- Permanent OH Transmission Line
 - Temporary OH Transmission Line

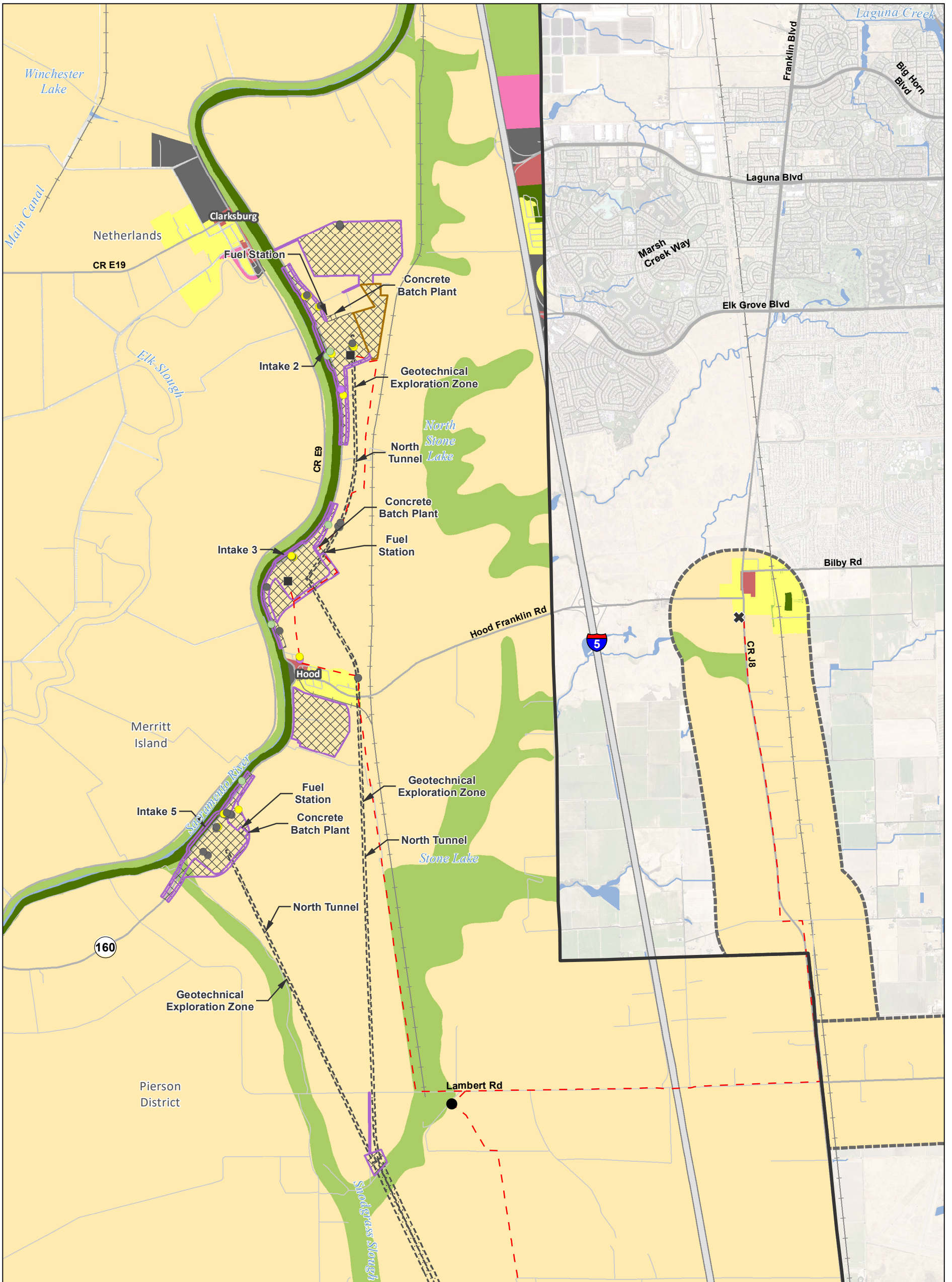
- Conveyance Construction Footprint**
- Permanent Subsurface Impact
- Temporary Surface Impact**
- Geotechnical Exploration Zone
 - Work Area
 - Other
- Permanent Surface Impact**
- Canal
 - Reusable Tunnel Material Area
 - Other

*Surface impacts are not expected to result from subsurface features.

**In-river features are not a permanent impact to navigation.



Sources: DWR CWF Engineering (rev 1e 2018); NAIP 2016



S:\RDEIR_EIS_Recirc\Appendix_Mapbooks\EIREIS_BTf_48K_Mapbook_SDE.mxd 2018529

Legend

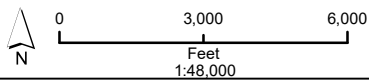
- Plan Area
- Areas of Additional Analysis
- Permanent Subsurface Impact
- Temporary Surface Impact
- Geotechnical Planning Area
- Work Area
- Other
- Canal
- Reusable Tunnel Material Area
- Other

Proposed Power

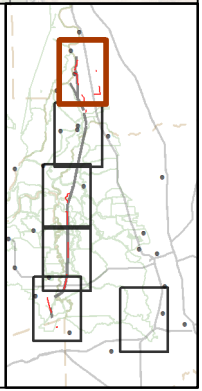
- Substation
- Capacitor Bank Substation
- Interconnection Point
- Permanent OH Transmission Line
- Temporary OH Transmission Line

Structures

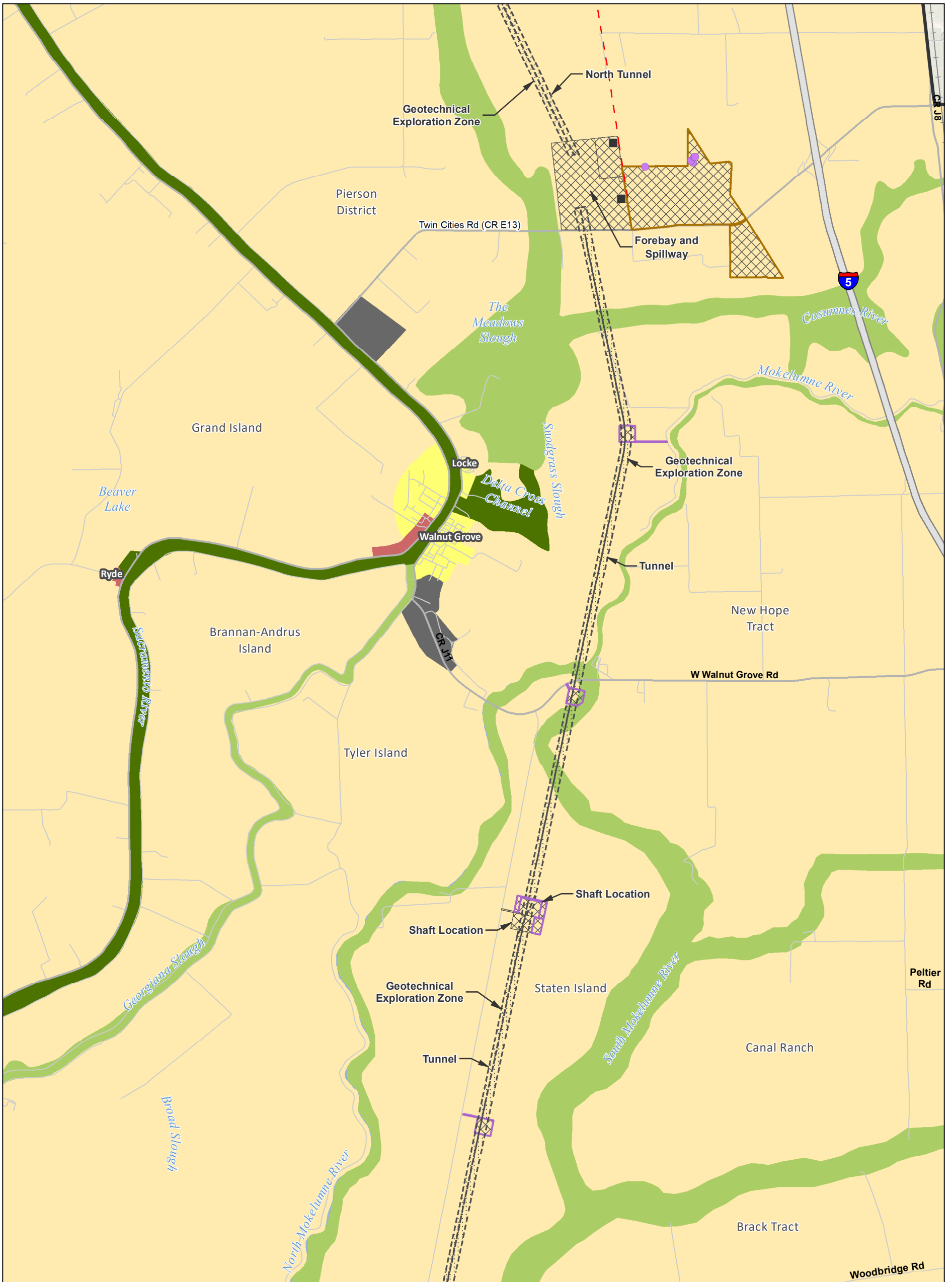
- Residential
- Recreational
- Storage/Support
- Other
- City
- Commercial
- Industrial
- Mixed Use
- Open Space
- Public/Semi-Public
- Recreation
- Residential



*Surface impacts are not expected to result from subsurface features. **In-river features are not a permanent impact to navigation.

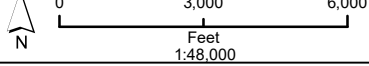


Sources: DWR CWF Engineering (rev 1e 2018); NAIP 2016; General Plan Land Use, ICF 2018; Structures, ICF-DHCCP 2018

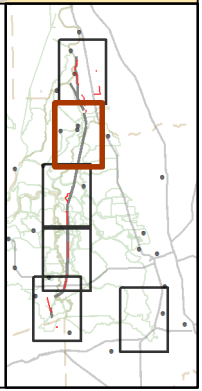


Legend

- | | | | | |
|--|---------------------------------|--------------------------------|-------------------------|--------------------|
| Plan Area | Work Area | Proposed Power | Structures | City |
| Areas of Additional Analysis | Other | Substation | StructureType | Commercial |
| Conveyance Construction Footprint | Permanent Surface Impact | Capacitor Bank Substation | Residential | Industrial |
| Permanent Subsurface Impact | Canal | Interconnection Point | Recreational | Mixed Use |
| Temporary Surface Impact | Reusable Tunnel Material Area | Permanent OH Transmission Line | Storage/Support | Open Space |
| Geotechnical Planning Area | Other | Temporary OH Transmission Line | Other | Public/Semi-Public |
| | | | General Land Use | Recreation |
| | | | Agriculture | Residential |



*Surface impacts are not expected to result from subsurface features. **In-river features are not a permanent impact to navigation.

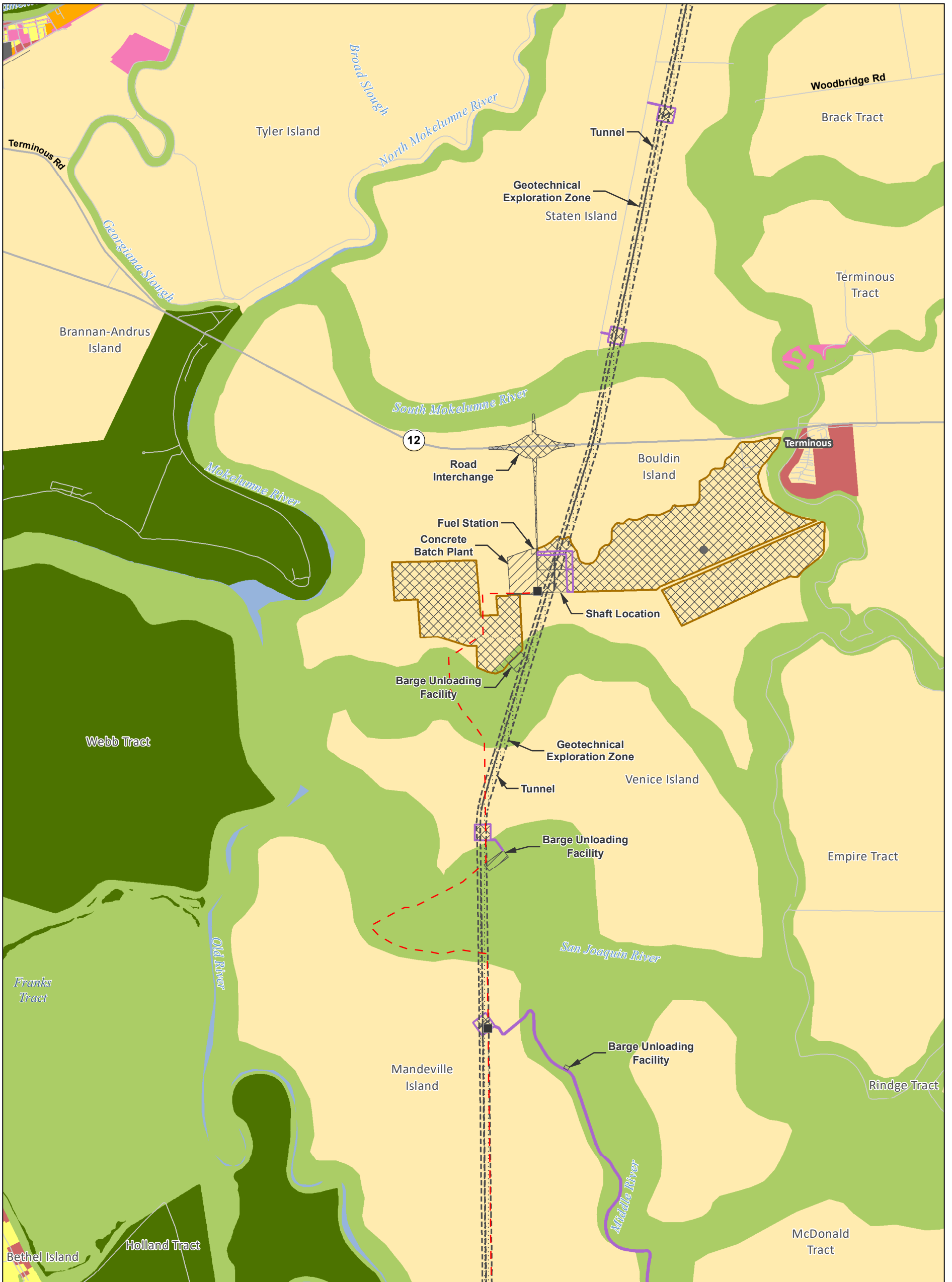


S:\RDEIR_EIS_Recirc\Appendix_Mapbooks\EIREIS_BTf_48K_Mapbook_SDE.mxd 20180529

Sources: DWR CWF Engineering (rev 1e 2018); NAIP 2016; General Plan Land Use, ICF 2018; Structures, ICF-DHCCP 2018

DRAFT: 29 May 2018

**Figure M13-4: Sheet 2 of 6
General Plan Land Use Designations — Proposed Project**



S:\RDEIR_EIS_Recirc\Appendix_Mapbooks\EIREIS_BTf_48K_Mapbook_SDE.mxd 20180529

Legend

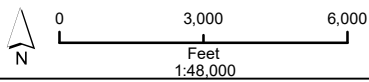
- Plan Area
- Areas of Additional Analysis
- Permanent Subsurface Impact
- Temporary Surface Impact
- Geotechnical Planning Area
- Work Area
- Other
- Canal
- Reusable Tunnel Material Area
- Other

Proposed Power

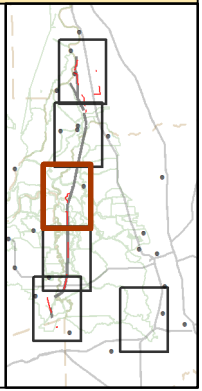
- Substation
- Capacitor Bank Substation
- Interconnection Point
- Permanent OH Transmission Line
- Temporary OH Transmission Line

Structures

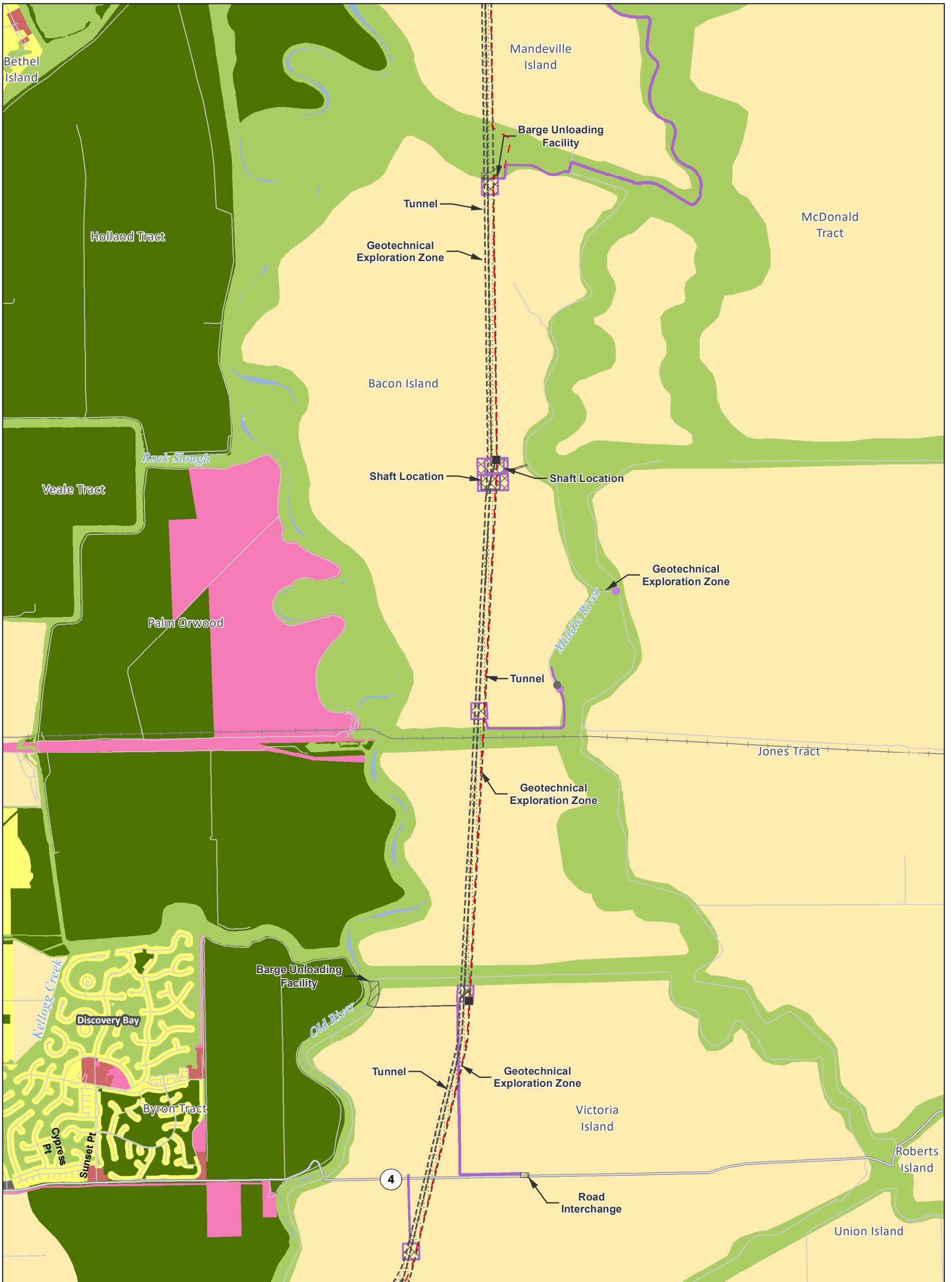
- Residential
- Recreational
- Storage/Support
- Other
- City
- Commercial
- Industrial
- Mixed Use
- Open Space
- Public/Semi-Public
- Recreation
- Residential



*Surface impacts are not expected to result from subsurface features. **In-river features are not a permanent impact to navigation.



Sources: DWR CWF Engineering (rev 1e 2018); NAIP 2016; General Plan Land Use, ICF 2018; Structures, ICF-DHCCP 2018



S:\RDEIR_EIS_Recirc\Appendix_Mapbooks\EIREIS_BTf_48K_Mapbook_SDE.mxd 2018529

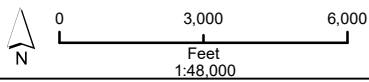
Legend

- Plan Area
- Areas of Additional Analysis
- Permanent Subsurface Impact
- Temporary Surface Impact
- Geotechnical Planning Area
- Work Area
- Other
- Canal
- Reusable Tunnel Material Area
- Other

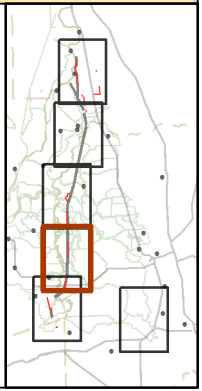
- Proposed Power**
- Substation
- Capacitor Bank Substation
- Interconnection Point
- Permanent OH Transmission Line
- Temporary OH Transmission Line

- Structures**
- StructureType**
- Residential
- Recreational
- Storage/Support
- Other
- General Land Use**
- Agriculture
- Residential

- City
- Commercial
- Industrial
- Mixed Use
- Open Space
- Public/Semi-Public
- Recreation
- Residential



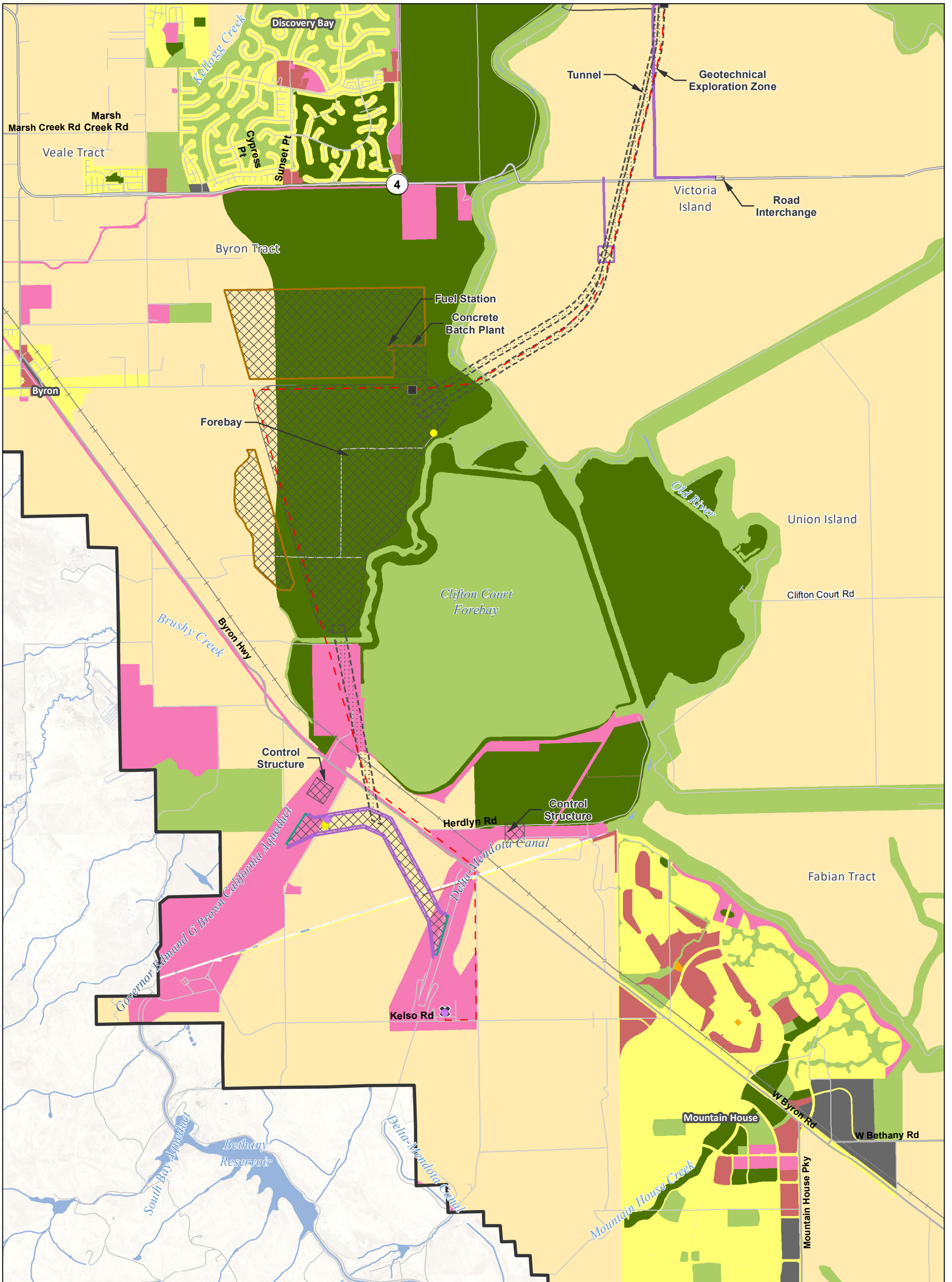
*Surface impacts are not expected to result from subsurface features. **In-river features are not a permanent impact to navigation.



Sources: DWR CWF Engineering (rev 1e 2018); NAIP 2016; General Plan Land Use, ICF 2018; Structures, ICF-DHCCP 2018

DRAFT: 29 May 2018

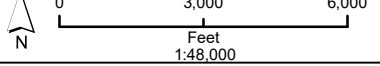
**Figure M13-4: Sheet 4 of 6
General Plan Land Use Designations — Proposed Project**



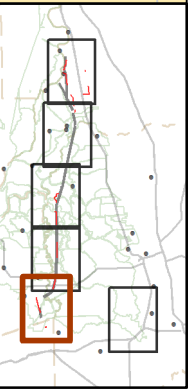
S:\RDEIR_EIS_Recirc\Appendix_Mapbooks\REIS_BTf_48K_Mapbook_SDE.mxd 20180529

Legend

- | | | | | |
|--|---------------------------------|--------------------------------|-------------------------|--------------------|
| Plan Area | Work Area | Proposed Power | Structures | City |
| Areas of Additional Analysis | Other | Substation | StructureType | Commercial |
| Conveyance Construction Footprint | Permanent Surface Impact | Capacitor Bank Substation | Residential | Industrial |
| Permanent Subsurface Impact | Canal | Interconnection Point | Recreational | Mixed Use |
| Temporary Surface Impact | Reusable Tunnel Material Area | Permanent OH Transmission Line | Storage/Support | Open Space |
| Geotechnical Planning Area | Other | Temporary OH Transmission Line | Other | Public/Semi-Public |
| | | | General Land Use | Recreation |
| | | | Agriculture | Residential |



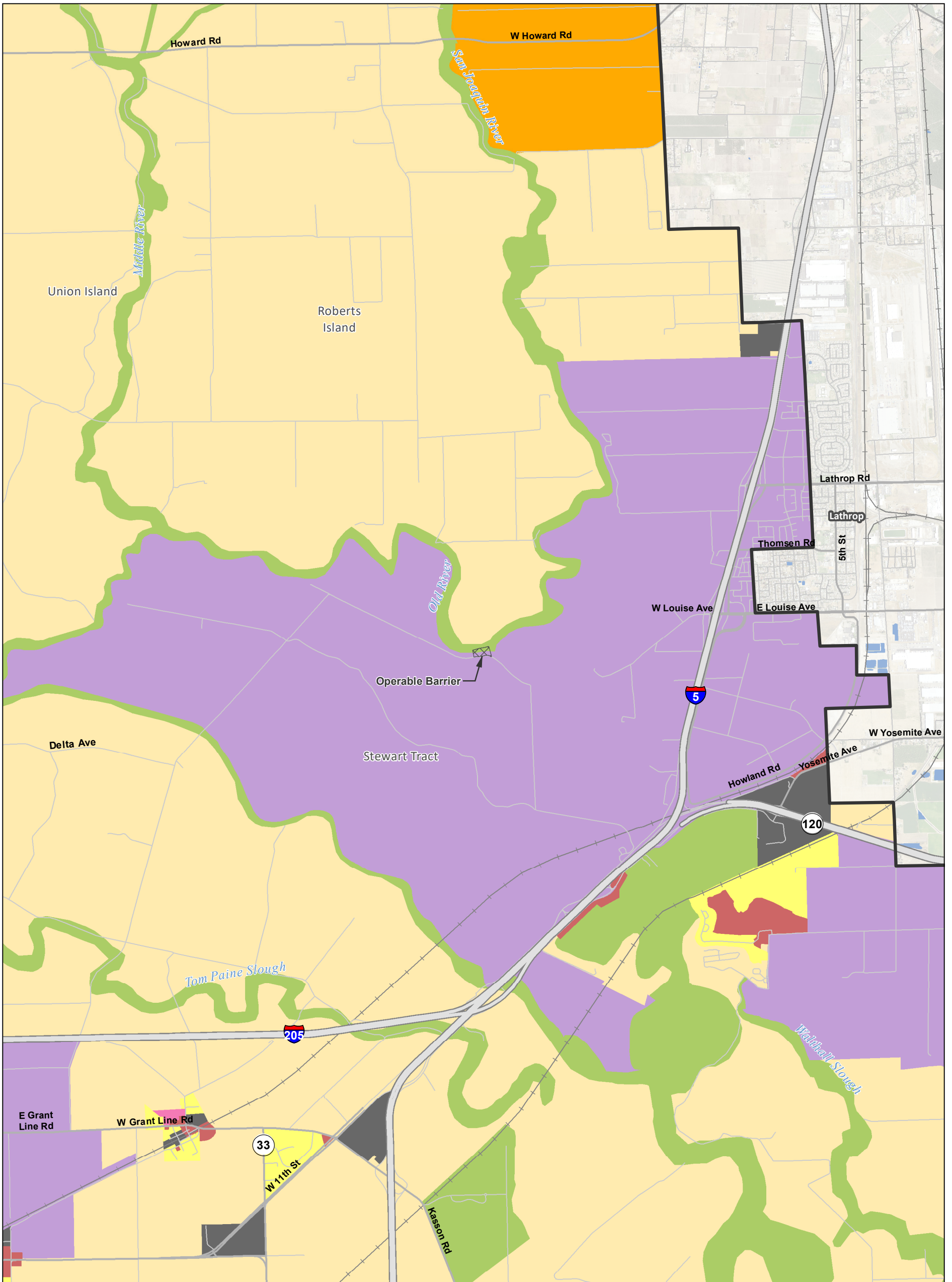
*Surface impacts are not expected to result from subsurface features. **In-river features are not a permanent impact to navigation.



Sources: DWR CWF Engineering (rev 1e 2018); NAIP 2016; General Plan Land Use, ICF 2018; Structures, ICF-DHCCP 2018

DRAFT: 29 May 2018

**Figure M13-4: Sheet 5 of 6
General Plan Land Use Designations — Proposed Project**



S:\RDEIR_EIS_Recirc\Appendix_Mapbooks\EIREIS_BTf_48K_Mapbook_SDE.mxd 2018529

Legend

- Plan Area
- Areas of Additional Analysis
- Permanent Subsurface Impact
- Temporary Surface Impact
- Geotechnical Planning Area
- Work Area
- Other
- Canal
- Reusable Tunnel Material Area
- Other

Proposed Power

- Substation
- Capacitor Bank Substation
- Interconnection Point
- Permanent OH Transmission Line
- Temporary OH Transmission Line

Structures

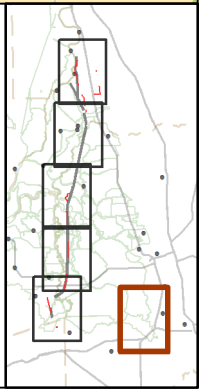
- Residential
- Recreational
- Storage/Support
- Other

General Land Use

- Agriculture
- Residential

- City
- Commercial
- Industrial
- Mixed Use
- Open Space
- Public/Semi-Public
- Recreation

*Surface impacts are not expected to result from subsurface features. **In-river features are not a permanent impact to navigation.



Sources: DWR CWF Engineering (rev 1e 2018); NAIP 2016; General Plan Land Use, ICF 2018; Structures, ICF-DHCCP 2018